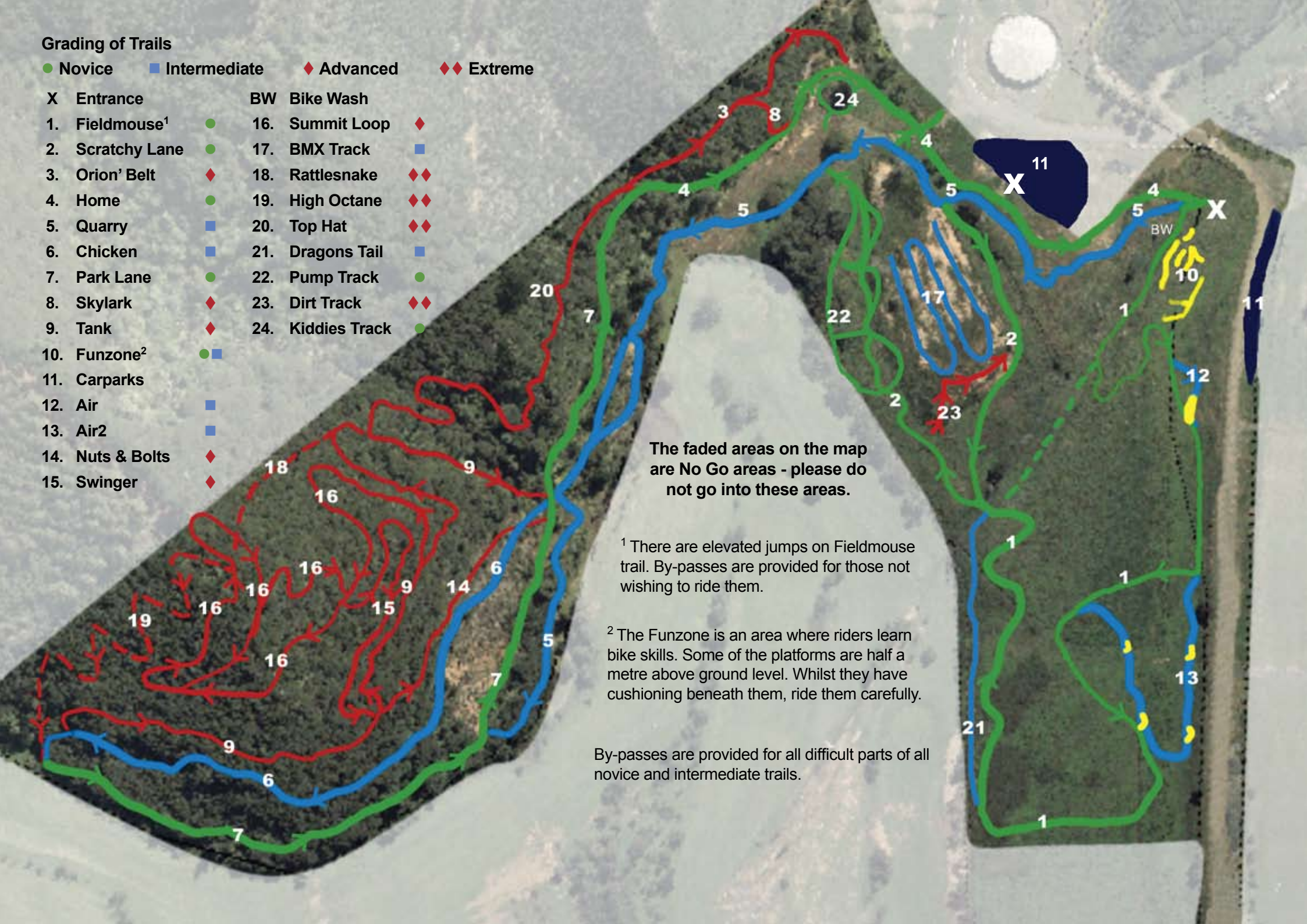


Grading of Trails

● Novice ■ Intermediate ◆ Advanced ◆◆ Extreme

- | | | | |
|----------------------------|----|-------------------|----|
| X Entrance | | BW Bike Wash | |
| 1. Fieldmouse ¹ | ● | 16. Summit Loop | ◆ |
| 2. Scratchy Lane | ● | 17. BMX Track | ■ |
| 3. Orion' Belt | ◆ | 18. Rattlesnake | ◆◆ |
| 4. Home | ● | 19. High Octane | ◆◆ |
| 5. Quarry | ■ | 20. Top Hat | ◆◆ |
| 6. Chicken | ■ | 21. Dragons Tail | ■ |
| 7. Park Lane | ● | 22. Pump Track | ● |
| 8. Skylark | ◆ | 23. Dirt Track | ◆◆ |
| 9. Tank | ◆ | 24. Kiddies Track | ● |
| 10. Funzone ² | ●■ | | |
| 11. Carparks | | | |
| 12. Air | ■ | | |
| 13. Air2 | ■ | | |
| 14. Nuts & Bolts | ◆ | | |
| 15. Swinger | ◆ | | |



The faded areas on the map are No Go areas - please do not go into these areas.

¹ There are elevated jumps on Fieldmouse trail. By-passes are provided for those not wishing to ride them.

² The Funzone is an area where riders learn bike skills. Some of the platforms are half a metre above ground level. Whilst they have cushioning beneath them, ride them carefully.

By-passes are provided for all difficult parts of all novice and intermediate trails.